



# Peninsula Golf & Country Club

SAN MATEO, CA, USA

## CASE STUDY

August 2025



MAKING EVERY DROP COUNT





# Case Study Summary

Water quality impacts soil and plant health. At Peninsula, the particular issues are bicarbonates and salinity. Observations since installation are improvements in:

## **Playability and Aesthetics:**

Turf becomes more resilient as compaction is relieved. Improved turf health and root growth contribute to a consistent, healthy appearance of fairways, greens, trees, shrubs, and landscaping features.

## **Mechanical Aeration:**

Mechanical aeration can be reduced or eliminated as compaction is relieved by RainMaker water use.

## **Drought Resistance:**

Increased soil water holding capacity and reduced permanent wilting point, combined with improved turf health, improves drought resistance.

## **Salinity/Bi-Carbonate Remediation:**

Salts and Bi-Carbonate's numbers are beginning to precipitate out of soil profile. We will continue to monitor via in-ground soil sensor network on property.

## **Deep Watering:**

Improved hydraulic conductivity, water infiltration, and distribution rates allow for longer wetting cycles to manage root zone characteristics effectively.

## **Decreased runoff coefficient:**

The improved water holding capacity and relief of compaction results in getting back on the course faster after a rain event with reduced runoff damage.



# Rainmaker.Earth System Impact

**Trial Period:  
July 1 – August 6, 2025  
(35 days; system active  
~50% due to tuning)**

Location	$\Delta$ Penetration (in)	$\Delta$ Root Depth (in)
#16 Tee	+2.00	+1.10
#8 Rough	+1.75	+0.25
#8 Fairway	+1.25	+0.50
#5 Rough	+4.00	+0.25
#5 Fairway	+0.85	+1.15
#16 Rough	+2.50	+0.75
#16 Fairway	+1.75	+1.00
#17 Rough	+1.25	+0.50
#17 Fairway	+1.00	+0.50

## KEY METRICS

Average Penetrometer  
Depth Increase:  
**+1.82 in**

Average Rooting  
Depth Increase:  
**+0.64 in**



# Visible Transformation

Photos show the improved rooting in Fairways, as well as healthier soil profile within 6 weeks.



Prior to Rainmaker.Earth



July 1, 2025



Aug 12, 2025



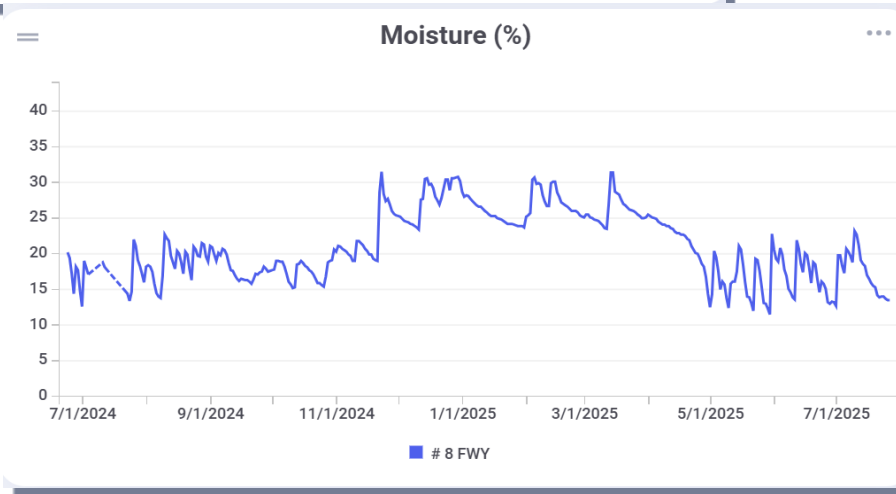
# Rainmaker.Earth System Impact



**Signs that the Rainmaker system is enhancing both soil health and water efficiency.**

## Moisture Content & Hydraulic Function

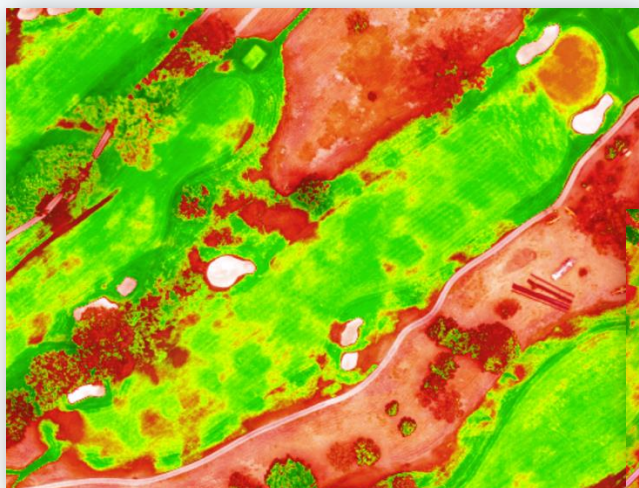
We've observed a steady increase in moisture holding capacity within the soil profile. Better water penetration from irrigation is contributing to this improvement. The extended-release curve following deep irrigation events is a strong indicator that more water is reaching deeper soil layers, offering better accessibility for root systems.



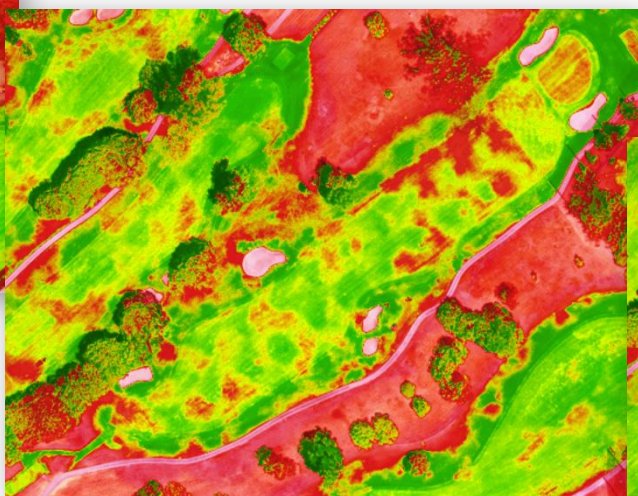


# NVDI Drone Shots

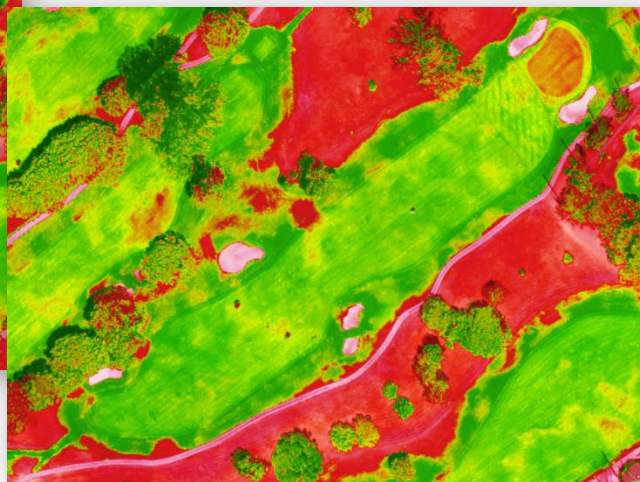
Illustrating changes in consistency of the turf



August 13, 2023



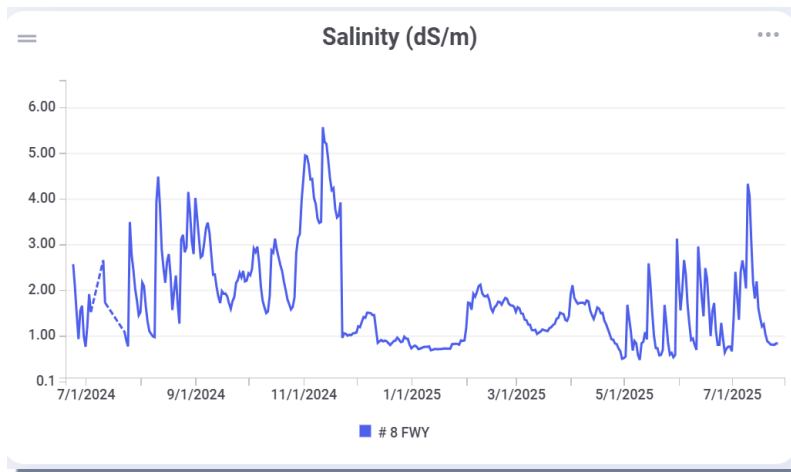
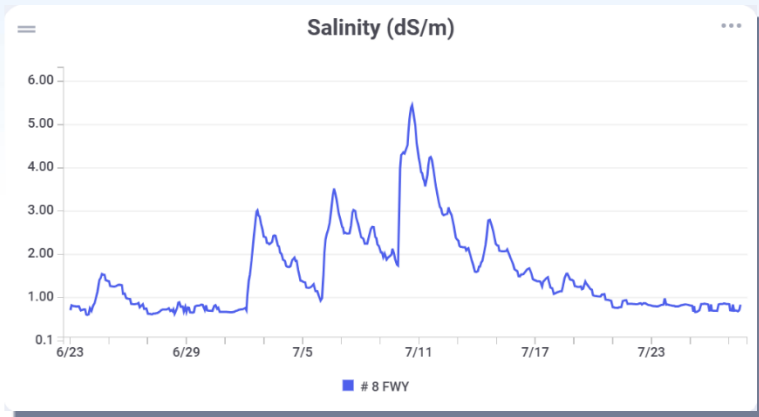
August 13, 2024



August 13, 2025



# Rainmaker.Earth System Impact



Signs that the Rainmaker.Earth System is enhancing both soil health and water efficiency.

## Salinity & Flushing Trends

Rainmaker-treated water is actively working to break down salts, as evidenced by the initial spike followed by a gradual steep decline in salinity readings. These peaks and valleys should begin to stabilize after major irrigation events as salts are broken down and precipitate through the profile. Over time, as the soil structure continues to improve, we anticipate faster salt precipitation thru the profile.

## Visual & Structural Shifts

The early increase in green coloration and improved infiltration are aligned with expectations at this stage — now about a month into running the Rainmaker system. **These visual cues are often the first signs of systemic change, and it's encouraging to see them correlate with deeper soil data.**



# Testimonial Questionnaire

Name: **Joe Budinich**  
Company: **Peninsula Golf & Country Club**  
Title/Role: **Director of Agronomy**  
Location: **San Mateo, CA**

## What challenges or needs led you to work with Rainmaker.Earth?

We have high sodium and bicarbonate levels in our irrigation water. This in turn leads to have issues with our soil becoming hydrophobic and general plant health issues. Rainmaker seemed like an easy fit to help solve some of these issues.

## How would you describe the process of working with our team? (e.g., communication, professionalism, responsiveness, collaboration)?

Working with Chris and Kevin has been very easy. Any issues that I brought up or concerns, they addressed immediately. A very professional team that strives to give the best service to their customers.

## What results have you seen since working with Rainmaker.Earth? (e.g., water savings, environmental impact, ROI, system performance)

We have only been using the system consistently for about a month now. I have noticed that the golf course has greened up dramatically and it generally just looks healthier, which isn't easy during the dog days of summer that we are in.

## How has this project or solution made a difference to your business/land?

I envision this system leading to healthier plants, trees and golf course here at Peninsula and also saving us some water.

## Were there any unexpected benefits or outcomes?

Since I have communicated frequently with Kevin and Chris about what to expect, I haven't noticed anything outside what they told me.

## On a scale of 1–10, how likely are you to recommend Rainmaker.Earth to others?:

10

## What would you say to someone considering working with us?

Very professional team and the return on investment can be large.

## Is there anything else you'd like to add?

I am excited to run this system for several seasons and reap the long-term benefits!



## **FOR MORE INFORMATION**

**Kevin Hauschel**  
**VP North America, Sales/Business Development**  
Rainmaker.Earth Corp.

**EMAIL: [kevin.hauschel@rainmaker.earth](mailto:kevin.hauschel@rainmaker.earth)**

**PHONE: 209-328-8130**

**[rainmaker.earth](http://rainmaker.earth)**